

Sight-Fishing for Stripers



FLW

FORREST L. WOOD

OUTDOORS

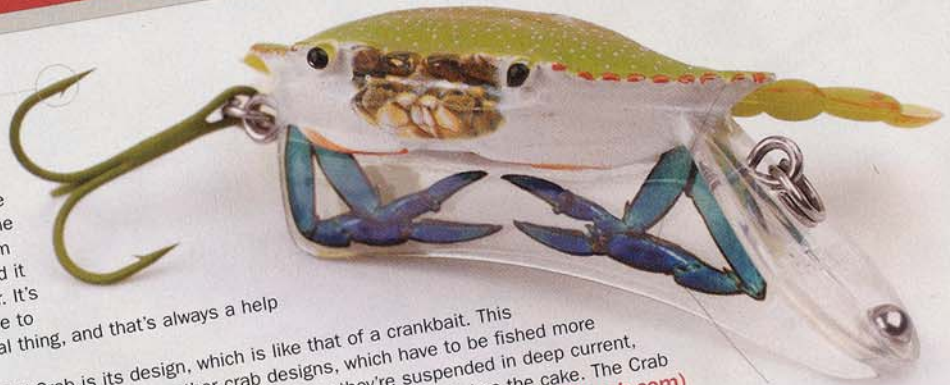
SALTWATER EDITION

BY CAPTAIN BENJAMIN DYALL

CW Crab

In fishing, two major components come into play the most: finding the fish and matching the hatch. Not coincidentally, those are the two biggest strong points of the CW Crab. This crab is molded from the actual shell of a live crab, and it is a realistic-looking crab imitator. It's not very likely a game fish is able to distinguish this lure from the real thing, and that's always a help when fish want a specific bait.

The other advantage to the CW Crab is its design, which is like that of a crankbait. This gives the crab the ability to cover more water than other crab designs, which have to be fished more slowly. The CW Crab is ideal for bringing the crab to the fish, whether they're suspended in deep current, hovering over a wreck or cruising the surface. For pure fish-finding ability, this crab takes the cake. The Crab comes in three weight-models and three colors, and the suggested retail price is \$9.95 each. (cwcrab.com)



BEST OF THE BEST

MOST SCENT:

Berkley Saltwater Gulp! Peeler Crab

EASE OF USE:

Berkley Saltwater Gulp! Peeler Crab

BEST ACTION:

D.O.A. Softshell Crab

VERSATILITY:

YUM Houdini Crab

UNIQUE COLOR VARIETY:

Storm WildEye Live Swimming Crab

MOST WATER COVERAGE:

CW Crab

MOST REALISTIC:

CW Crab